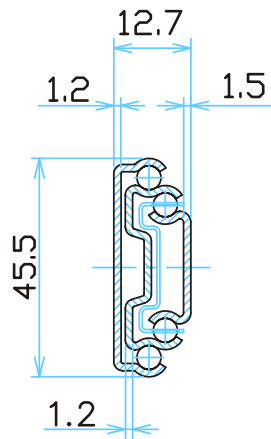


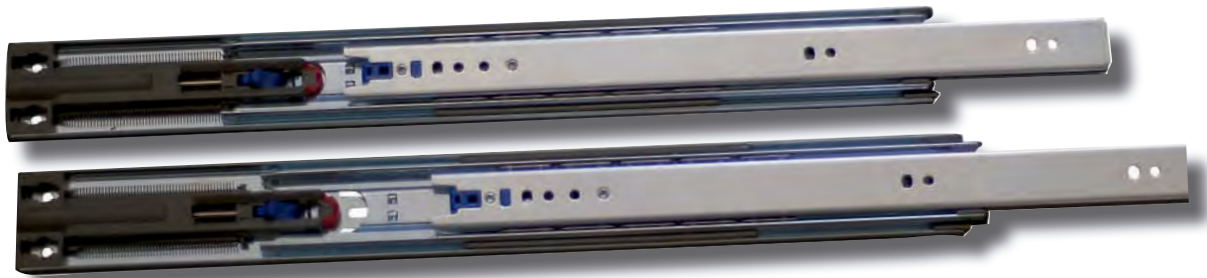
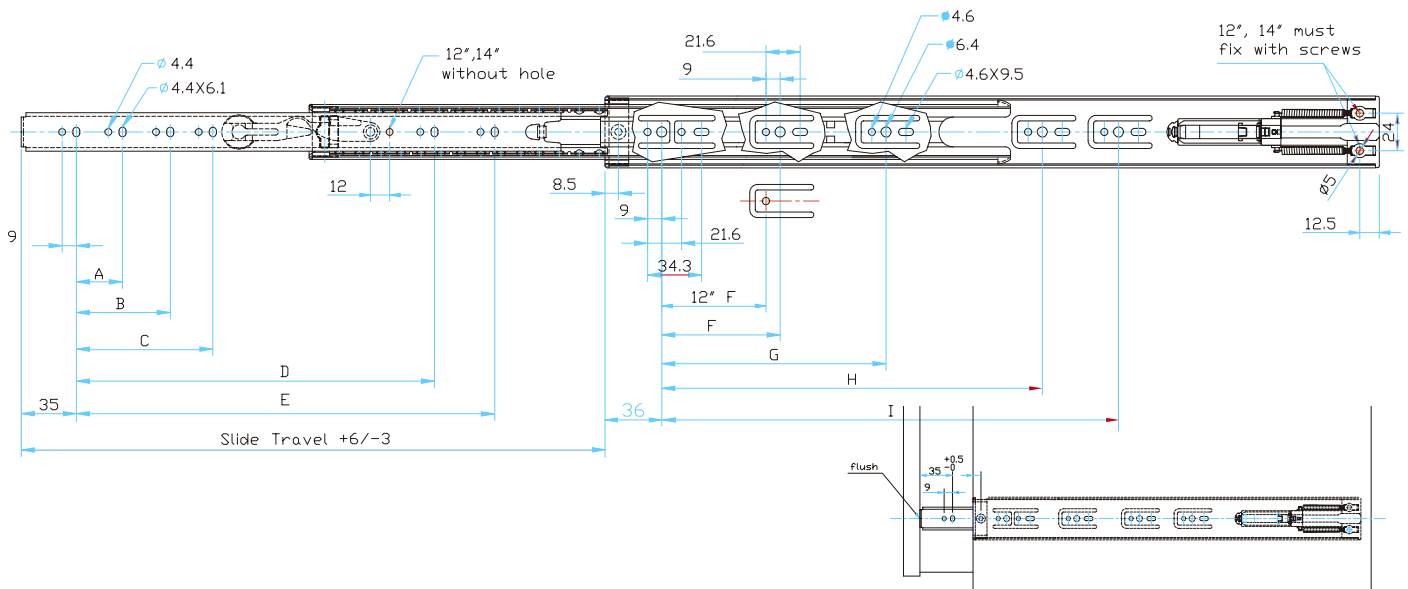
Características técnicas

- Extracción total
- Material: acero laminado en frío
- Montaje lateral
- Acabado: zincado brillante
- Desmontable por palanca
- Movimiento silencioso
- Cojinete de bolas de acero
- Soft closing con doble muelle



Technical specifications

- Full extension
- Material: cold rolled steel
- Side mounting
- Finishing: bright zinc-coated
- Drawer front disconnect
- Silent movement
- Carbon steel ball bearings
- Soft-Self closing with double-spring



CODE	Slide Length	Slide Travel	A	B	C	D	E	F	G	H	I	Carton Kg.	Carton pair
10036	300	238	-	-	-	-	156	119	-	-	-	9.00	10
10037	350	305	-	-	-	-	200	128	-	-	-	10.00	10
10038	400	378	96	-	-	-	256	128	208	-	-	11.70	10
10039	450	430	128	-	-	-	294	128	256	-	-	12.20	10
10040	500	482	96	160	-	-	344	128	304	-	-	14.00	10
10041	550	533	96	160	352	-	394	128	224	352	-	15.20	10
10042	600	584	128	192	384	-	444	128	224	352	-	16.70	10
10043	650	635	128	224	416	-	494	128	224	352	448	18.80	10
10044	700	685	128	224	416	480	544	128	224	352	496	20.00	10